

Interactive Brokers Group Reports Brokerage Metrics and Other Financial Information for May 2023, includes Reg.-NMS Execution Statistics

GREENWICH, CT, June 1, 2023 — Interactive Brokers Group, Inc. (Nasdaq: IBKR) an automated global electronic broker, today reported its Electronic Brokerage monthly performance metrics for May.

Brokerage highlights for the month included:

- 1.860 million Daily Average Revenue Trades (DARTs)¹, 19% lower than prior year and 5% higher than prior month.
- Ending client equity of \$345.1 billion, 10% higher than prior year and 1% higher than prior month.
- Ending client margin loan balances of \$39.8 billion, 10% lower than prior year and 1% higher than prior month.
- Ending client credit balances of \$98.7 billion, including \$2.9 billion in insured bank deposit sweeps², 8% higher than prior year and 1% lower than prior month.
- 2.26 million client accounts, 19% higher than prior year and 2% higher than prior month.
- 186 annualized average cleared DARTs¹ per client account.
- Average commission per cleared Commissionable Order³ of \$3.08 including exchange, clearing and regulatory fees. Key products:

May 2023	Average Order Size	Average Commission per Cleared Commissionable Order
Stocks	1,013 shares	\$1.95
Equity Options	6.6 contracts	\$4.43
Futures	3.3 contracts	\$4.36

Futures include options on futures. We estimate exchange, clearing and regulatory fees to be 57% of the futures commissions.

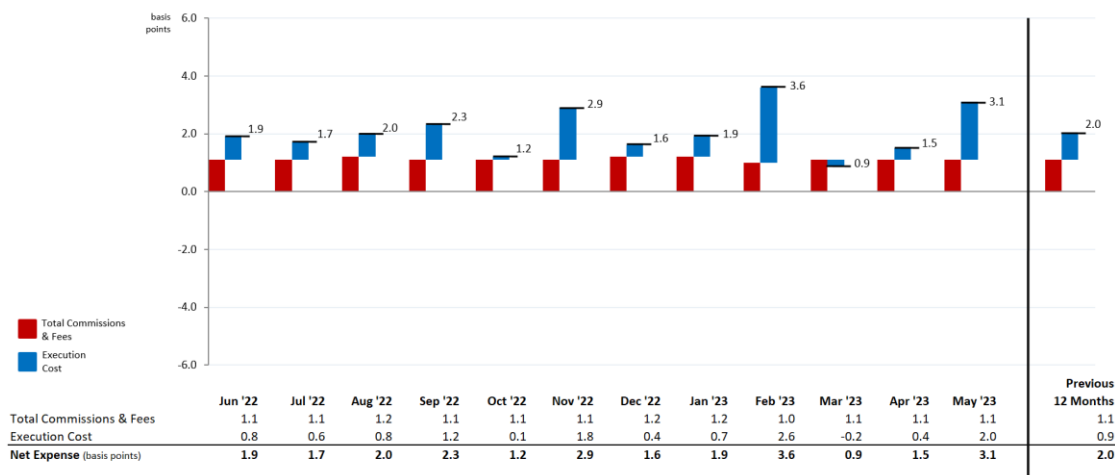
Other financial information for Interactive Brokers Group:

- GLOBAL⁴: The value of the GLOBAL, reported in U.S. dollars, decreased by 0.53% in May.

In the interest of transparency, we quantify our IBKR PRO clients' all-in cost of trade execution below.

- Average U.S. Reg.-NMS stock trade was \$21,017 in May (dividing 2c by 1a in table below).
- In May, IBKR PRO clients' total cost of executing and clearing U.S. Reg.-NMS stocks through IB was about 3.1 basis points of trade money⁵, as measured against a daily VWAP⁶ benchmark (2.0 basis points net cost for the rolling twelve months).

IBKR PRO Reg.-NMS Stock Trading Expense Summary



IBKR PRO Clients' Reg.-NMS Stock Trading Expense Detail
All amounts are in millions, except %

	Jun '22	Jul '22	Aug '22	Sep '22	Oct '22	Nov '22	Dec '22	Jan '23	Feb '23	Mar '23	Apr '23	May '23	Previous 12 Months
#1a - Number of orders													
Buy orders	6.78	5.66	7.28	6.29	6.26	6.10	5.76	5.97	6.37	7.28	4.99	6.13	74.87
Sell orders	5.20	4.43	5.72	4.60	4.77	4.76	4.23	4.65	4.79	5.37	3.72	4.66	56.90
Total	11.98	10.09	13.00	10.89	11.03	10.86	9.99	10.62	11.16	12.65	8.71	10.79	131.77
#1b - Number of shares purchased or sold													
Shares bought	2,983	2,554	3,123	2,625	2,726	2,803	2,704	2,904	2,857	3,399	2,336	2,706	33,721
Shares sold	2,884	2,447	3,031	2,532	2,632	2,681	2,522	2,768	2,711	3,180	2,158	2,606	32,152
Total	5,867	5,001	6,154	5,157	5,358	5,484	5,226	5,672	5,567	6,579	4,495	5,313	65,873
#2 - Trade money including price, commissions and fees													
2a Buy money	\$123,938	\$107,963	\$121,655	\$111,851	\$117,260	\$116,590	\$99,937	\$109,220	\$122,485	\$139,588	\$90,813	\$114,892	\$1,376,191
2b Sell money	\$125,425	\$106,681	\$122,556	\$112,867	\$117,092	\$115,319	\$100,639	\$108,135	\$121,850	\$136,889	\$91,534	\$111,882	\$1,370,867
2c Total	\$249,362	\$214,644	\$244,211	\$224,718	\$234,352	\$231,909	\$200,576	\$217,356	\$244,335	\$276,476	\$182,346	\$226,774	\$2,747,058
#3 - Trade value at Daily VWAP													
3a Buy value	\$123,875	\$107,993	\$121,639	\$111,806	\$117,318	\$116,603	\$99,874	\$109,252	\$122,425	\$139,592	\$90,785	\$114,824	\$1,375,987
3b Sell value	\$125,409	\$106,747	\$122,590	\$112,874	\$117,179	\$115,399	\$100,608	\$108,207	\$121,878	\$136,917	\$91,534	\$111,883	\$1,371,224
3c Total	\$249,284	\$214,740	\$244,229	\$224,680	\$234,497	\$232,003	\$200,481	\$217,459	\$244,303	\$276,509	\$182,319	\$226,707	\$2,747,211
#4 - Total trade expense, including commissions and fees, relative to Daily VWAP													
4a Buys (2a-3a)	\$62.8	(\$30.1)	\$15.6	\$44.4	(\$58.5)	(\$13.5)	\$63.6	(\$31.6)	\$60.2	(\$4.6)	\$27.5	\$68.3	\$203.9
4b Sells (3b-2b)	(\$15.7)	\$66.0	\$33.5	\$6.8	\$86.8	\$80.4	(\$31.3)	\$72.2	\$28.0	\$28.4	(\$0.0)	\$1.4	\$356.4
4c Total trade expense	\$47.1	\$35.9	\$49.1	\$51.2	\$28.3	\$66.9	\$32.3	\$40.6	\$88.2	\$23.8	\$27.4	\$69.7	\$560.3
Trade expense as percentage of trade money													
4c/2c	0.019%	0.017%	0.020%	0.023%	0.012%	0.029%	0.016%	0.019%	0.036%	0.009%	0.015%	0.031%	0.020%
#5 - Trade expense categories													
5a Total commissions & fees	\$27.3	\$23.2	\$28.7	\$24.5	\$25.3	\$25.6	\$23.8	\$25.6	\$25.8	\$28.4	\$19.2	\$23.4	\$300.8
5b Execution cost (4c-5a)	\$19.8	\$12.7	\$20.4	\$26.7	\$3.0	\$41.2	\$8.5	\$15.1	\$62.4	(\$4.7)	\$8.2	\$46.3	\$259.6
#6 - Trade expense categories as percentage of trade money													
Total commissions & fees (5a/2c)	0.011%	0.011%	0.012%	0.011%	0.011%	0.011%	0.012%	0.012%	0.010%	0.011%	0.011%	0.011%	0.011%
Execution cost (5b/2c)	0.008%	0.006%	0.008%	0.012%	0.001%	0.018%	0.004%	0.007%	0.026%	-0.002%	0.004%	0.020%	0.009%
Net Expense to IB Clients	0.019%	0.017%	0.020%	0.023%	0.012%	0.029%	0.016%	0.019%	0.036%	0.009%	0.015%	0.031%	0.020%

The above illustrates that the rolling twelve months' average all-in cost of an IBKR PRO client U.S. Reg.-NMS stock trade was 2.0 basis points.

Note 1: Daily Average Revenue Trades (DARTs) – customer orders divided by the number of trading days in the period.

Note 2: FDIC insured client bank deposit sweep program balances with participating banks. These deposits are not reported in the Company's statement of financial condition.

Note 3: Commissionable Order – a customer order that generates commissions.

Note 4: In connection with our currency diversification strategy, we have determined to base our net worth in GLOBALs, a basket of 10 major currencies in which we hold our equity. The total effect of the currency diversification strategy is reported in Comprehensive Income and the components are reported in (1) Other Income and (2) Other Comprehensive Income ("OCI") on the balance sheet. The effect of the GLOBAL on our comprehensive income can be estimated by multiplying the total equity for the period by the change in the U.S. dollar value of the GLOBAL during the same period.

Note 5: Trade money is the total amount of money clients spent or received, including all commissions and fees.

Note 6: Consistent with the clients' trading activity, the computed VWAP benchmark includes extended trading hours.

More information, including historical results for each of the above metrics, can be found on the investor relations page of the Company's corporate web site, www.interactivebrokers.com/ir.

About Interactive Brokers Group, Inc.:

Interactive Brokers Group affiliates provide automated trade execution and custody of securities, commodities and foreign exchange around the clock on over 150 markets in numerous countries and currencies, from a single integrated platform to clients worldwide. We service individual investors, hedge funds, proprietary trading groups, financial advisors and introducing brokers. Our four decades of focus on technology and automation has enabled us to equip our clients with a uniquely sophisticated platform to manage their investment portfolios. We strive to provide our clients with advantageous execution prices and trading, risk and portfolio management tools, research facilities and investment products, all at low or no cost, positioning them to achieve superior returns on investments. For the fifth consecutive year, Barron's ranked Interactive Brokers #1 with 5 out of 5 stars in its March 25, 2022, Best Online Brokers Review.

Cautionary Note Regarding Forward-Looking Statements:

The foregoing information contains certain forward-looking statements that reflect the company's current views with respect to certain current and future events and financial performance. These forward-looking statements are and will be, as the case may be, subject to many risks, uncertainties and factors relating to the company's operations and business environment which may cause the company's actual results to be materially different from any future results, expressed or implied, in these forward-looking statements. Any forward-looking statements in this release are based upon information available to the company on the date of this release. The company does not undertake to publicly update or revise its forward-looking statements even if experience or future changes make it clear that any statements expressed or implied therein will not be realized. Additional information on risk factors that could potentially affect the company's financial results may be found in the company's filings with the Securities and Exchange Commission.

Contacts for Interactive Brokers Group, Inc.: Rob Garfield - media@ibkr.com.